

System Incident Management Update

June 3, 2020

Distribution: All Medical Staff, Yale New Haven Health System Employees and Leadership

New Updates In RED

Letter from the Chief Clinical Officer

Dear Colleagues,

We continue to transition into simultaneously supporting our patients and communities in expanding COVID-19 testing and care, while ramping up our non-COVID-19 related clinical services.

Our clinical and operational leaders, supply chain, and infection prevention groups are working hard to develop clarity on how to provide the safest care in all our facilities, and we expect to communicate details regarding PPE guidelines for all care settings early next week.

We are dramatically increasing testing of asymptomatic patients and healthcare workers, and thankfully are detecting extremely low rates of asymptomatic COVID-19 infections – less than half a percent of those tested have been testing positive. This reassuring data suggests that current risks of asymptomatic transmission in our healthcare settings are low, and are further mitigated by the use of PPE.

The numbers of admitted patients with COVID-19 continues to decrease, as does the number requiring ICU care. As the state started to reopen on May 20th, we will be closely monitoring our testing results as well as COVID-19 admissions to detect any increase in the spread of infection. The ongoing protests across the country, which have been peaceful in our region, may also have an impact in the spread of the virus, which we will continue to monitor.

I thank you for your ongoing professionalism and engagement in the service of our patients. I urge you to continue to support your colleagues and team members in managing the stress of the pandemic and social unrest. Identifying and recognizing our common humanity is critical to maintaining the strength of our institutional and community fabric.

With thanks,



Thomas Balcezak, MD
Chief Clinical Officer
Yale New Haven Health

New Updates for June 3

Updated pediatric inpatient COVID treatment algorithm and management of MIS-C

The treatment algorithm for pediatric inpatients with COVID-19 and guidelines for management of multi-inflammatory syndrome in children (MIS-C) have been updated. Changes include the addition of remdesivir and removal of hydroxychloroquine lopinavir-ritonavir and atazanavir. Please see the attached documents.

Retesting patients with COVID-19

Please see the attached document for guidance on retesting patients for COVID-19 for clearance for procedures and admission using PCR.

Ambulatory COVID-19 re-opening guidelines

As we enter the transformational phase of the COVID-19 pandemic, there is a clear need to return to 'normal' operations across the system. In doing so, we must ensure the safety of our staff, patients, and visitors. The Corporate Facilities Workplace Re-Opening Guidelines provide recommendations for modifying areas in order to return to work safely. Marketing has created standard signage for system-wide use, which can be ordered via Marketplace. Please see the attached documents.

Self-Monitoring

The attached poster can serve as a helpful reminder to monitor yourself twice daily for symptoms and fever. A list of symptoms is on the poster, as well as instructions on who to call should you experience any of the symptoms.

Update on drug shortages

The Health System's Corporate Pharmacy Services keeps a close watch on drugs in short supply and provide regular updates. There are no significant changes from 5/27. An update on drug supply for the most commonly used infusions in the ICU and procedural areas including sedatives, analgesics, neuromuscular blockers and vasopressors is attached.

YNHHS COVID-19 Virtual Town Hall: June 4, 3 – 3:45pm

Please join us, **Thursday, June 4th at 3:00 to 3:45pm**, online or via phone for a YNHHS COVID-19 Virtual Town Hall. We will provide a live update on our health system's response to the coronavirus pandemic for Yale New Haven Health Employees and Medical Staff. Please send your questions in advance via email to

YNHHpublicrelations@ynhh.org. Write **YNHHS Town Hall** in the email subject field.
You can also post questions through live Zoom.

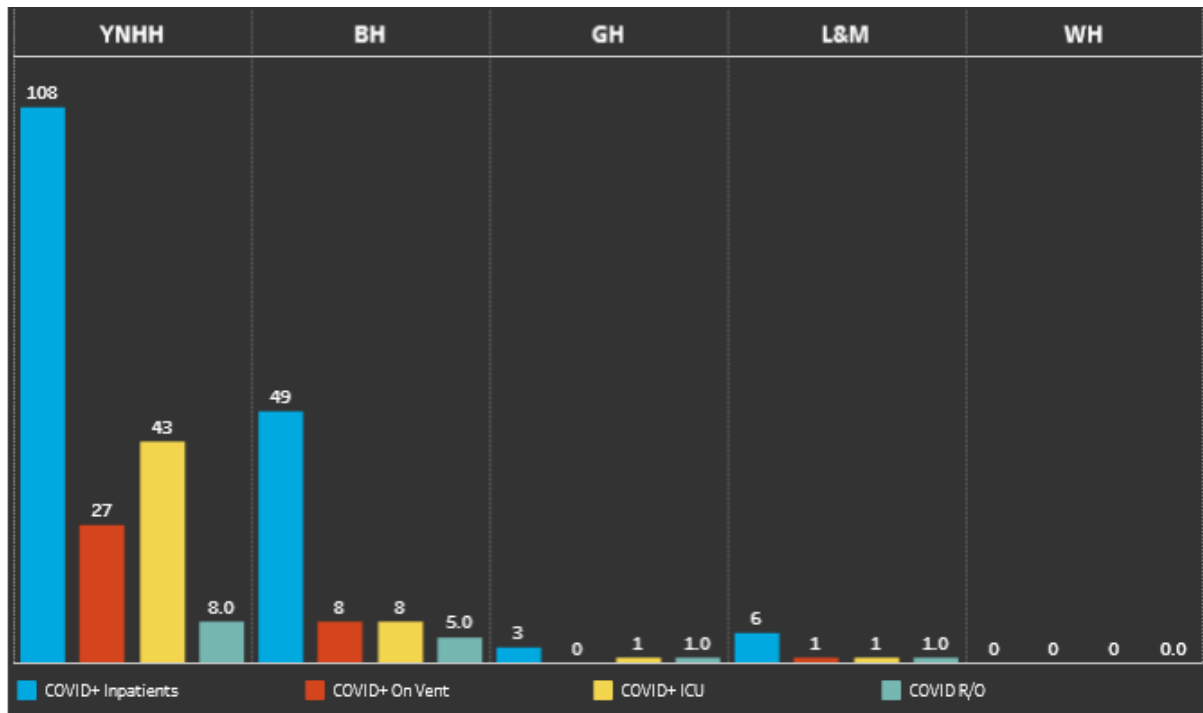
Panelists:

- Marna Borgstrom, Chief Executive Officer, Yale New Haven Health
- Thomas Balcezak, MD, Chief Clinical Officer, Yale New Haven Health
- Kevin Myatt, Chief Human Resources Officer, Yale New Haven Health

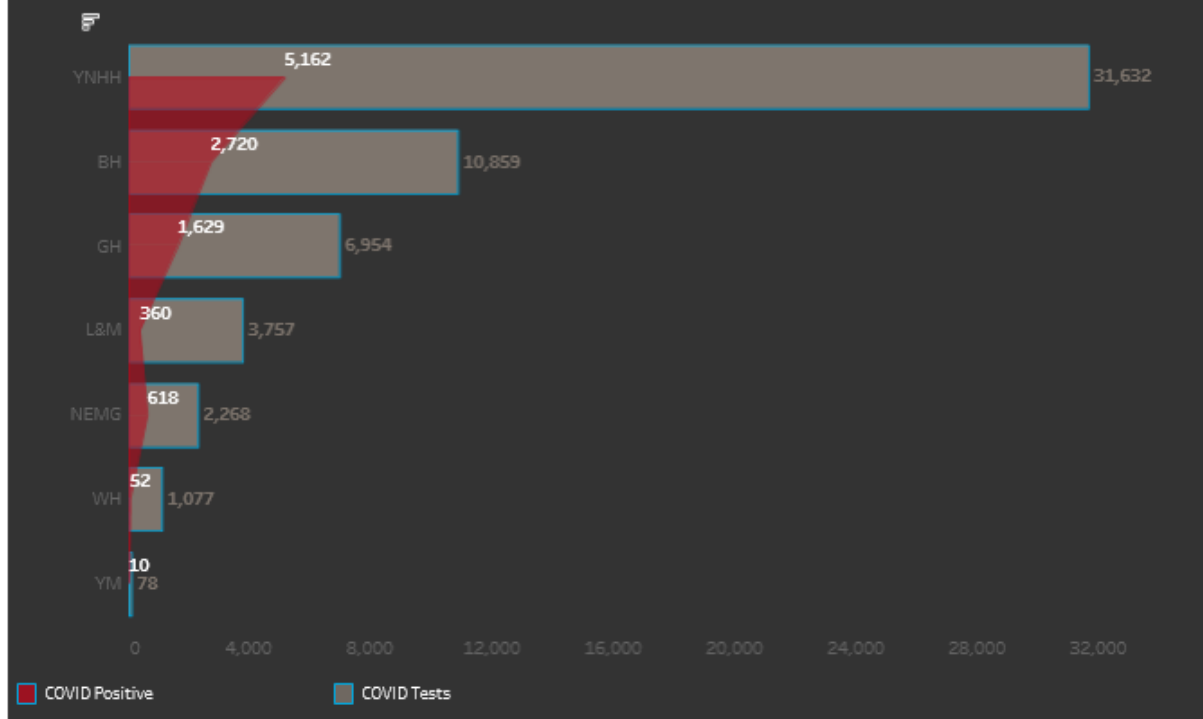
Zoom URL:

<https://ynhh.zoom.us/j/91860959813?pwd=ZHJJSVNITDZUU1FtK3JGeGIDQXNrdz09>

Operational Snapshot (Source: JDAT)

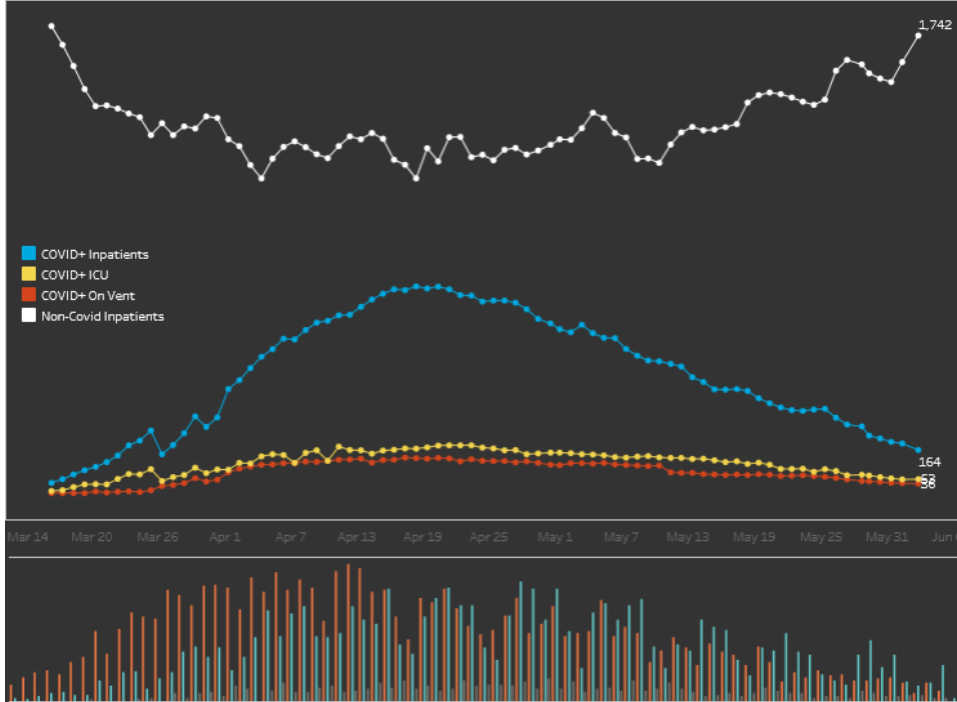


YNHHS COVID TESTING



COVID Status Day to Day

Current Totals



COVID+ Inpatients
164

COVID+ Inpatient in ED
0

COVID+ Floor
111

COVID+ ICU
53

COVID+ On Vent
36

COVID+ Admissions (Today)
0

COVID+ Discharges (Today)
3

COVID+ Mortality (Today)
1

	YNHH	BH	GH	LMH	LMW
Inpatient PUI	8 (10)	5 (4)	1 (0)	1 (1)	0 (0)
COVID Positive	108 (122)	49 (54)	3 (10)	6 (6)	0 (0)
COVID in ICU	43 (46)	8 (6)	1 (2)	1 (2)	0 (0)

6/3/2020 9:00am

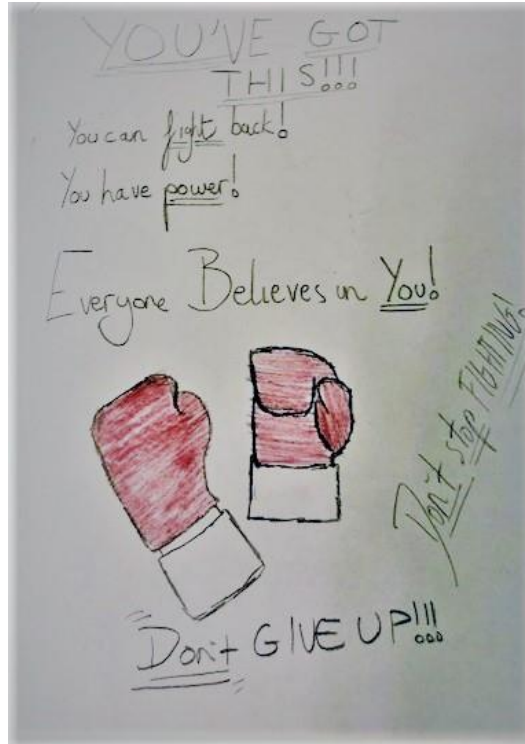
Yesterday

25

Since March 14

2,988

COVID-19 patients have been **discharged** back to their lives after being treated by our **healthcare heroes**.



Personal Protective Equipment (PPE)

YNHHS/YM PPE Policy

- The ambulatory and inpatient policy and related FAQ are available on the Clinical Resources site at: <https://www.ynhhs.org/patient-care/covid-19/for-employees.aspx>

PPE reuse and collection

- ***Please do not wear makeup such as foundation or lipstick as they soil the facemasks and respirators making them ineligible for reprocessing. Makeup is the #1 cause of being unable to reprocess.***
- PPE reuse policy and other information can be found on the Clinical Resources page at: <https://www.ynhhs.org/patient-care/covid-19/for-employees.aspx>

Clinical Care/Operations

Infection prevention contact email

Please utilize the below email address for your inquiries about COVID-19 - they will be triaged with a goal of replying within 48 hours, please indicate in the subject if urgent. Please do not use this email for patient consults that are urgent in nature.

COVID_InfectionPrevention@ynhh.org

Resources:

Attachments to this message can also be found [here](#).

Previous All Staff updates are archived and can be accessed [here](#).