

# THE PREPAREDNESS REPORT

The Center for Emergency Preparedness and Disaster Response

Volume 4, Issue 5 | February 3, 2006

ELEVATED THREAT LEVEL

## Pandemic Planning

Summit: **New**



**“Pandemics are global in nature, but their effects are always local,”** said Michael Leavitt, Secretary of the Federal Department of Health and Human Services on February 2, 2006 as he addressed more than 600 local public health, police, fire, EMS, healthcare, education and

business leaders at the Pandemic Planning Summit in Hartford, CT. The conference was coordinated to discuss concerns that the A-H5N1 flu avian strain could become easily transmissible and cause a pandemic outbreak much like the 1918 flu virus, creating a health, economic and social crisis in the United States.

“Any community that fails to prepare, with the expectation that the federal government will, at the last moment, be able to step in and make emergency preparations – come to the rescue- will be tragically wrong,” said Leavitt. He discussed five important focuses of the federal government related to help with National Pandemic Preparedness including disease management, anti-viral medications, vaccines, communications and local planning.

State officials, including J. Robert Galvin, MD, MPH, Commissioner of The Connecticut Department of Public Health discussed the potential impact of pandemic influenza on Connecticut’s economy, infrastructure and general population.

The Connecticut Department of Public Health and Human Services have created a state Pandemic Influenza Response plan draft. This draft can be found at <http://www.dph.state.ct.us/avian/CTDPH%20pan%20flu%20plan%202-feb-2006.pdf>

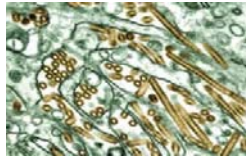
Individuals are urged to use this document to assist them in planning locally in response to pandemic event. For more information, please visit: <http://www.pandemicflu.gov/>.

### References:

Associated Press. “Reil, HHS Secretary Lead Flu Pandemic Conference.” *The Hartford Courant* 3 Feb. 2006 < <http://www.courant.com/news/local/statewire/hc-03020307.apds.m0503.bc-ct-fluseb03.0.4743704.story>>.

Condon, Garret. “Planning Key If Pandemic Flu Hits State.” *The Hartford Courant* 3 Feb. 2006 < <http://www.courant.com/news/health/hc-flu0203.artfeb03.0.6720292.story>>.

## Pandemic Influenza: **New**



According to the World Health Organization (WHO) the cumulative number of confirmed cases of avian influenza H5N1 as of January 30, 2006 was 160 cases and 85 deaths.

- On January 30, 2006 The Ministry of Health in Iraq confirmed the country’s first case of a human infection with the H5N1 avian influenza virus. The case occurred in a 15-year-old girl who died on January 17, 2006 following a severe respiratory illness. Her symptoms were compatible with a diagnosis of H5N1 avian influenza. Preliminary laboratory confirmation was provided by a US Naval Medical Research Unit located in Cairo, Egypt. The girl’s 39-year-old uncle, who cared for her during her illness, developed symptoms on January 24, 2006 and died of a severe respiratory disease on January 27, 2006. Both patients resided in the town of Raniya near Sulaimaniyah in the northern part of the country, close to the border with Turkey. Poultry deaths were recently reported in their neighborhood, but H5N1 avian influenza has not yet been confirmed in birds in any part of the country. Poultry samples have been sent for testing at an external laboratory. To read this report further, please visit [http://www.who.int/csr/don/2006\\_01\\_30a/en/index.html](http://www.who.int/csr/don/2006_01_30a/en/index.html).
- The World Health Organization (WHO) has developed a global influenza preparedness plan, which defines the phases of a pandemic flu outbreak, outlines the role of WHO and makes recommendations for national measures before and during a pandemic. Currently, the Avian Flu is at Phase 3. To read about the phases further, please visit <http://www.cdc.gov/flu/pandemic/phases.htm>.
- The states of Alaska, Kansas, Texas and Washington has created materials related to pandemic influenza planning. To view their materials, please visit [http://www.astho.org/templates/display\\_pub.php?pub\\_id=1383&admin=1](http://www.astho.org/templates/display_pub.php?pub_id=1383&admin=1)

## Quarantine Conference Call

February 7, 2006: **Updated**

The CDC will host a conference call on February 7, 2006 at 1:00 p.m. EST. Danitza Tomianovic, MPH, Quarantine Public Health Officer will address the subject of quarantine. If you would like to join this call, please call the toll-free dial-in number at 888-373-3590, passcode quarantine). Slides for this presentation are available at the following link: <http://www.bt.cdc.gov/coca/callsummary.asp>.

## Public Health Activities in Louisiana – 1 to 2 Months after Hurricane Katrina: **Updated**

The CDC has collected a series of reports discussing public health response to Hurricane Katrina one to two months after the storm. Special reports detailing carbon monoxide poisoning, infectious disease and dermatologic conditions in evacuees and rescue workers, injury and illness surveillance in hospitals and acute-care facilities and other topics are highlighted. This is the first of two special issues. Please visit <http://www.cdc.gov/mmwr/preview/mmwrhtml/mm5502a1.htm> or <http://www.cdc.gov/mmwr/preview/mmwrhtml/mm5502a4.htm>? to view these reports.

### INSIDE THIS ISSUE

**2** Pandemic Influenza Stockpiling of Disposable Ventilators

**2** Flu Season

**3** Training and Education

**4** Upcoming Meetings and vents

**4** Upcoming Training and Education

## Pandemic Influenza – Stockpiling of Disposable Ventilators: Updated

In order to ensure a consistent approach, the Connecticut Respiratory Care Directors group has developed recommendations to guide hospital planning related to the development of statewide respiratory care capacity for a pandemic influenza event. This group, with representatives from the State of Connecticut Department of Public Health and the Hospital Centers of Excellence, have developed a survey to identify existing ventilator capacity and related issues among all of Connecticut's acute care hospitals. The survey is expected to be distributed shortly. The findings will be used to focus respiratory care planning efforts and recommendations on areas with the greatest demonstrated need. For more information, please contact Elaine Forte at 203-688-3391 or [elaine.forte@ynhh.org](mailto:elaine.forte@ynhh.org).

## Assessment of Health-Related Needs After Tsunami and Earthquake:

New



The Cooperative for Assistance and Relief Everywhere, Inc. (CARE) International Indonesia and CDC conducted surveys to determine the health

and nutrition status of the affected populations and to evaluate the effectiveness of relief interventions seven months after the tsunami and 3 months after the second earthquake. Three districts were surveyed in the Aceh Province, Aceh Besar, Banda Aceh, and Simeulue. This report summarizes the results of those surveys, which identified routine vaccinations and provision of toilets or latrines as particular areas for improvement and revealed no significant difference in health indicators between internally displaced persons (IDPs) and nondisplaced populations. To read the report in full, please visit <http://www.cdc.gov/mmwr/preview/mmwrhtml/mm5504a1.htm>

## Flu Season (Continued): New



- The CDC has posted a gallery of flu related resources that can be downloaded from their site. Items such as a [Notice to Patients to Report Flu Symptoms, Facts & Myths](#), [Who is at High Risk of Flu Complications?](#) and [Influenza and Your Child](#) can be found at <http://www.cdc.gov/flu/professionals/flugallery/flyers.htm>.
- A Spanish translation of "Influenza Symptoms, Protection, and What to Do if You Get Sick" is available from the CDC. To view this document, visit <http://www.cdc.gov/flu/espanol/symptoms.htm>.
- In July of 2005, The CDC Advisory Committee on Immunization Practices (ACIP) published a set of recommendations respecting the prevention and control of influenza (MMWR, 54 (R08); 1-40). The ACIP recommended that beginning in October of each year, health care facilities should offer influenza vaccinations to all workers, including night and weekend staff. Particular emphasis should be placed on providing vaccinations to persons who care for members of groups at high risk for complications. Efforts should be made to educate healthcare workers regarding the benefits of vaccination and the potential health consequences of influenza illness for themselves, their family members and their patients. All healthcare workers should be provided convenient access to influenza vaccine at the work site, free of charge, as part of employee health programs.

The Joint Commission on Accreditation of Healthcare Organizations (JCAHO) believes that integrating these recommendations into the Infection Control standards and the improving organization performance standards would increase patient safety and reduce the number and seriousness of influenza complications among at risk populations. JCAHO is interested in receiving feedback about whether influenza vaccination should be made mandatory among care-givers in various health care settings, what categories of individuals should be vaccinated, whether the option to decline vaccination for legitimate or other reasons should be provided, and whether and how organizations can track declination rates. To respond, please visit

[http://www.jcaho.org/accredited+organizations/critical+access+hospitals/standards/field+reviews/influenza\\_immunization\\_fr.htm](http://www.jcaho.org/accredited+organizations/critical+access+hospitals/standards/field+reviews/influenza_immunization_fr.htm)

- During the week of January 21, 2006, five states (Colorado, Connecticut, Kansas, Texas, and Wyoming) reported widespread influenza activity. Twenty-three states (Alaska, Arizona, Arkansas, California, Georgia, Idaho, Iowa, Kentucky, Maryland, Minnesota, Mississippi, Nebraska, New Mexico, New York, North Carolina, Oregon, Pennsylvania, Rhode Island, Tennessee, Utah, Virginia, Washington, and Wisconsin) and New York City reported regional influenza activity. Nine states (Florida, Indiana, Massachusetts, Michigan, Montana, Nevada, Ohio, Oklahoma, and South Dakota) and the District of Columbia reported local influenza activity. Thirteen states (Alabama, Delaware, Hawaii, Illinois, Louisiana, Maine, Missouri, New Hampshire, New Jersey, North Dakota, South Carolina, Vermont, and West Virginia), reported sporadic influenza activity. To read this report in full, please visit <http://www.cdc.gov/flu/weekly/>.

### QUESTIONS OR COMMENTS

Questions, comments or suggestions should be forwarded by fax to (203) 688-4618 or by e-mail to [center@ynhh.org](mailto:center@ynhh.org) [www.yalenewhavenhealth.org/emergency](http://www.yalenewhavenhealth.org/emergency)

## Emergency Credentialing Program (ECP): **New**

Testing of the new online registration system for individuals who are interested in participating in the State of Connecticut Emergency Credentialing Program for Healthcare Professionals (ECP) is underway. Launch of the enhanced system is scheduled for March. To help promote the importance of the ECP and the new online registration system, each of the participating hospitals in the state will be asked to highlight the registration system during appropriate management meetings, hospital newsletters and include a link to the registration site on their hospital intranet and internet homepages. To date 2,193 physicians and midlevel providers and 1,476 professionals representing behavioral health, laboratory medicine, diagnostic imaging, nursing, pharmacy, paramedics and respiratory therapists have enrolled in the program. Healthcare professionals who are enrolled in the ECP program will have access to state sponsored liability and workers compensation coverage during a Governor declared state of emergency when providing services anywhere besides their employing hospital. For more information, please contact Carol Luddy, RN by phone at (203) 688-5544 or by email at [carol.luddy@ynhh.org](mailto:carol.luddy@ynhh.org)

## Training and Education: **New**

- **A narrated version of Introduction to Emergency Management (EM 103)** for hospital employees will be available on February 1, 2006. The CD-ROM based version of EM 103 is playable on most computers and can be used to complement instructor-led training events, such as workshops or new hire orientation. For more information, please contact Mark Schneider at (203) 688-2577 or [mark.schneider@ynhh.org](mailto:mark.schneider@ynhh.org)
- **Radiation Basics for Health Care Workers (EM 110)** is targeted for release on the Yale New Haven Health System learning management system in the Spring of 2006. Upon completion of this course, learners will be able to identify experts at a health care facility who can provide information and assistance during radiation and nuclear emergencies and disasters, identify steps to ensure personal health and safety from harmful radiation and identify ways to assist in the response to a radiation emergency including during decontamination. Please contact Mark Schneider at (203) 688-2577 or [mark.schneider@ynhh.org](mailto:mark.schneider@ynhh.org) for more information.

## Training and Education (Continued): **New**



**Bioterrorism Preparedness for Clinicians (EM 201)** is a 50-minute course designed to prepare physicians and other clinicians for a bioterrorist event or other potential public health emergency. Now available at <http://ynhhs.emergencyeducation.org/>, EM 201 helps clinicians recognize bioterrorism agent disease syndromes, learn the precautions they should take, and understand their roles in the event of a public health emergency. For more information please contact please contact Mark Schneider at (203) 688-2577 or [mark.schneider@ynhh.org](mailto:mark.schneider@ynhh.org).

- Yale New Haven Center of Excellence for Bioterrorism Preparedness and Response and the State of Connecticut Department of Public Health are collaborating on an approach for hospital personnel to complete the FEMA sponsored Incident Command Systems (ICS) and Incident Management System (IMS) training programs. Completion of these courses, or their equivalent by targeted personnel, is a requirement of organization compliance with the National Incident Management System. These programs include IS 100, IS 200 and IS 700. For more information, please contact please contact Elaine Forte at (203) 688-3391 or [elaine.forte@ynhh.org](mailto:elaine.forte@ynhh.org).

As part of compliance with the National Incident Management System, organizations are required to document completion of FEMA sponsored incident management training, or its equivalent, by all staff. In order to facilitate compliance by healthcare organizations, the Yale New Haven Center for Emergency Preparedness and Disaster Response (YNHH-CEPDR) is working on incorporating the FEMA training objectives into Emergency Management (EM 103). Additional objectives targeted to staff at the supervisory level and above are being incorporated into EM 140, Incident Command Systems for Healthcare. For more information, please contact Elaine Forte at (203) 688-3391 or [Elaine.forte@ynhh.org](mailto:Elaine.forte@ynhh.org).

- **Mental Health for Non-Mental Health Professionals (EM 230)** is currently under development on the Yale New Haven Health System learning management system and is expected to be available Spring of 2006. This course will train health professionals in the recognition, treatment and referral of patients exhibiting behavioral health consequences related to public health emergencies and will incorporate brief video vignettes to enhance the learner experience. For more information, please contact Mark Schneider at (203) 688-2577 or [mark.schneider@ynhh.org](mailto:mark.schneider@ynhh.org).
- **Best Practices for the Protection of Hospital Based First Receivers (EM 120)** is now available on the YNHHS-CoE learning management system. The thirty minute awareness level course meets OSHA defined competencies for first receivers to respond to a hazardous exposure. This course is recommended for all emergency department staff (clinical and non-clinical) and any other health care workers with potential roles near a hospital decontamination zone. The course may be accessed at <http://ynhhs.emergencyeducation.org/>

## Upcoming Meetings and Events



DATE	TIME	EVENT	LOCATION
2.9.06	11:00 a.m. to 1:00 p.m.	Yale New Haven Health System-wide Drill	Assigned Locations
2.15.06	8:30 a.m. to 10:00 a.m.	Southern Tier Meeting	Connecticut Hospital Association (CHA)

## Upcoming Training and Education

DATE	TIME	EVENT	LOCATION
2.7.06	1:00 p.m. to 2:00 p.m. EST	CDC COCA Conference Call – Quarantine	Dial-in Number: (888) 373-3590 Pass Code: Quarantine To download slides: <a href="http://www.bt.cdc.gov/coca/callsummary.asp">http://www.bt.cdc.gov/coca/callsummary.asp</a>

### FOR MORE INFORMATION, PLEASE CONTACT

**Christopher Cannon**

Director  
(203) 688-3229  
[christopher.cannon@ynhh.org](mailto:christopher.cannon@ynhh.org)

**James Paturas**

System Manager  
(203) 688-3496  
[james.paturas@ynhh.org](mailto:james.paturas@ynhh.org)

**Mukesh Roy**

Regional Planning Coordinator  
(203) 688-2563  
[mukesh.roy@ynhh.org](mailto:mukesh.roy@ynhh.org)

**Louise-Marie Dembry, MD**

Associate Medical Director  
(203) 688-4634  
[louise-marie.dembry@ynhh.org](mailto:louise-marie.dembry@ynhh.org)

**Elaine Forte**

Program Development Manager  
(203) 688-3391  
[elaine.forte@ynhh.org](mailto:elaine.forte@ynhh.org)

**Carol Luddy, RN**

ECP Program Coordinator  
(203) 688-5544  
[carol.luddy@ynhh.org](mailto:carol.luddy@ynhh.org)

1 Church Street, 5<sup>th</sup> Floor • New Haven, CT 06510 • Tel. (203) 688-3224 • Fax (203) 688-4618  
[center@ynhh.org](mailto:center@ynhh.org) • [www.yalenewhavenhealth.org/emergency](http://www.yalenewhavenhealth.org/emergency)